

RSA SecurID® Software Tokens



Quick Start Guide for Android

Getting Started

RSA SecurID® Software Tokens provide the same remote access that physical RSA SecurID® Tokens provide, but now with ease through your mobile device. You'll still use a six-digit token code to access the NSF Virtual Desktop application; however, you will now get this code through the RSA SecurID® Software Token mobile application, available for both iOS and Android through the Apple App Store or the Google Play Store.

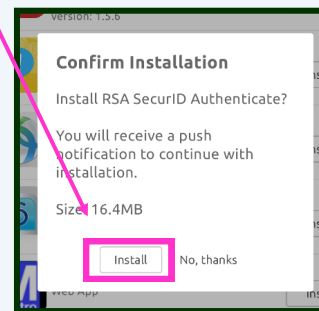
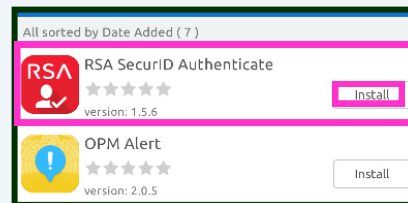
INSTALLING THE RSA SECURID® SOFTWARE TOKEN APP

OPTION 1: Using Airwatch

Open AirWatch Agent, and log in, if prompted. Then, locate the RSA SecurID® Authenticate App, and tap Install. A “Confirm Installation” dialogue box will appear—tap Install. Another dialogue box will appear. Tap Install again, and accept.

As the application installs, it will display as processing. Do not close the window or navigate away from this screen.

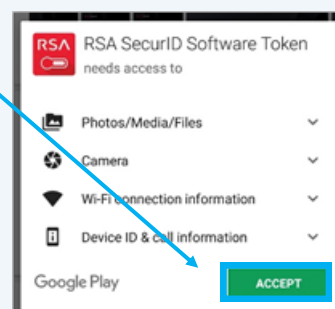
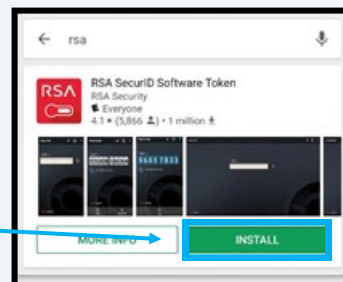
Note: You may be prompted to enter your password to begin the installation.



OPTION 2: Using The Google Play Store

Tap the Google Play Store icon on your device. Then tap Search, and enter the keywords: RSA SecurID. Select the RSA SecurID® Software Token app. Tap Install, and accept to install the application.

Note: The status icon will display the progress of the download. When the download is complete, a notification icon appears in the status bar. The app is also listed in the Notifications window. The store window will then display an Open button.



RSA SecurID® Software Tokens—Quick Start Guide for Android

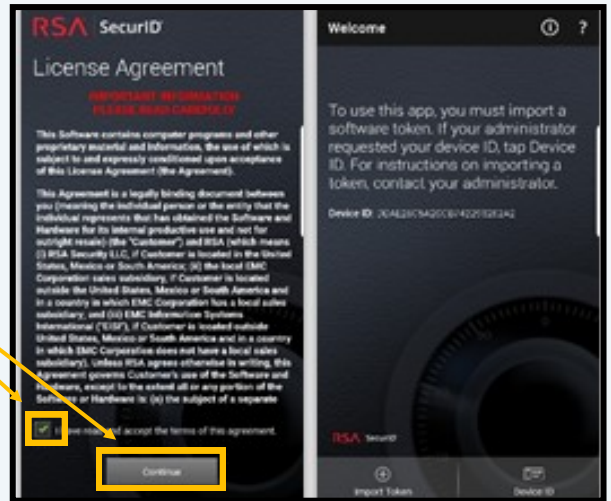
ACCEPTING THE RSA SECURID® SOFTWARE TOKEN APP'S LICENSE AGREEMENT

After installing, open the RSA SecurID® Software Token mobile app on your device.

The License Agreement will appear upon launch. Check the box to accept. Then, tap Continue. Afterwards, the Welcome screen will launch.

Close the app.

Note: You may be prompted to enter your password to begin the installation.



ACTIVATING YOUR RSA SECURID® SOFTWARE TOKEN

On your device, open the RSA SecurID® Software Token activation email you received to access your activation link.

Click on the link. The link will automatically import.

CREATING YOUR RSA SECURID® SOFTWARE TOKEN PIN

Note: For the following steps to work successfully, you must disconnect from the NSF_STAFF network, and connect to the NSF_GUEST network. Otherwise, you must be off-site.

Navigate to the [NSF Remote Access site](#). Click on the Virtual Desktop icon.

At the sign-in screen, enter your username (LAN ID) and password.

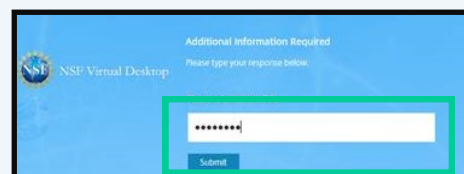
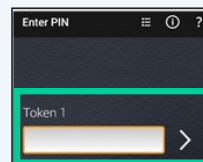
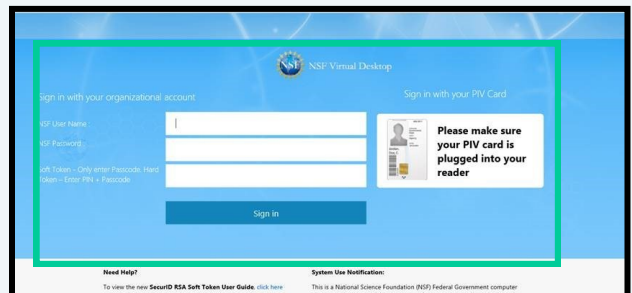
For the Token Passcode field: In the RSA SecurID® Software Token app, tap the white arrow on your RSA Soft Token to generate a one-time six-digit code.

Enter this code into the field, and click the white arrow again.

Note: PINs must be four to eight digits long. PINs cannot begin with the number one (1) or the number zero (0). PINs cannot contain repeating or consecutive numbers (i.e. 2222, or 4567).

Click the Sign In button to log into Virtual Desktop. You will be prompted to create a new PIN.

Enter your new PIN; click Submit; and confirm it again on the next screen.



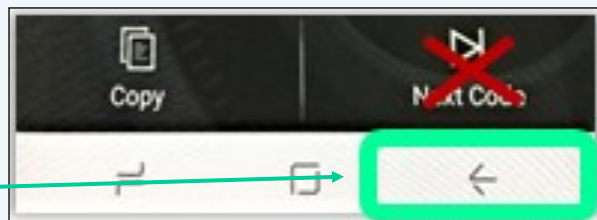
RSA SecurID® Software Tokens—Quick Start Guide for Android

CREATING YOUR RSA SECURID® SOFTWARE TOKEN PIN CONTINUED

Virtual Desktop will prompt you for a passcode.

Proceed with the following steps:

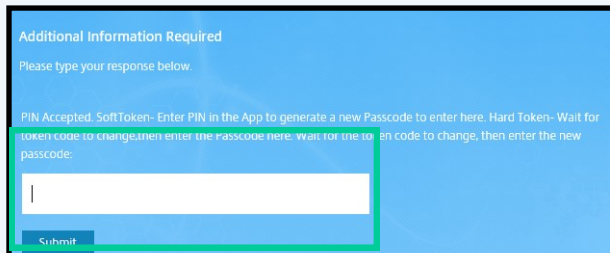
1. **Wait** for the generated code to expire on your soft token.
2. Once expired, **press the back arrow on the bottom, right corner of the app** to return to the main screen.



Next, enter your newly created PIN into the app.

Tap the white arrow icon to generate another token passcode.

Return to the Virtual Desktop screen, and enter the newly generated passcode into the field.



REVIEW AND TIPS FOR YOUR RSA SECURID® SOFTWARE TOKEN

Upon submittal, you will have successfully provisioned your token and created your RSA SecurID® Software Token PIN. Use this PIN to generate a passcode each time you need to access any NSF resource that requires RSA SecurID® authentication.

To review: Every time you require RSA SecurID® authentication, (1) **launch** your RSA SecurID® Software Token mobile app; (2) **enter** your PIN; (3) **press** the white arrow to generate a passcode; and (4) **enter** this code into the appropriate field to log in. **Remember: use this passcode only to log in.**

Using Your Token:

- ⇒ Upon app launch, you will be prompted for your PIN.
- ⇒ Enter your PIN.
- ⇒ Press the white arrow.
- ⇒ Now, a token code will generate for use.